

KIS.ME

Keep it simple. Manage everything.

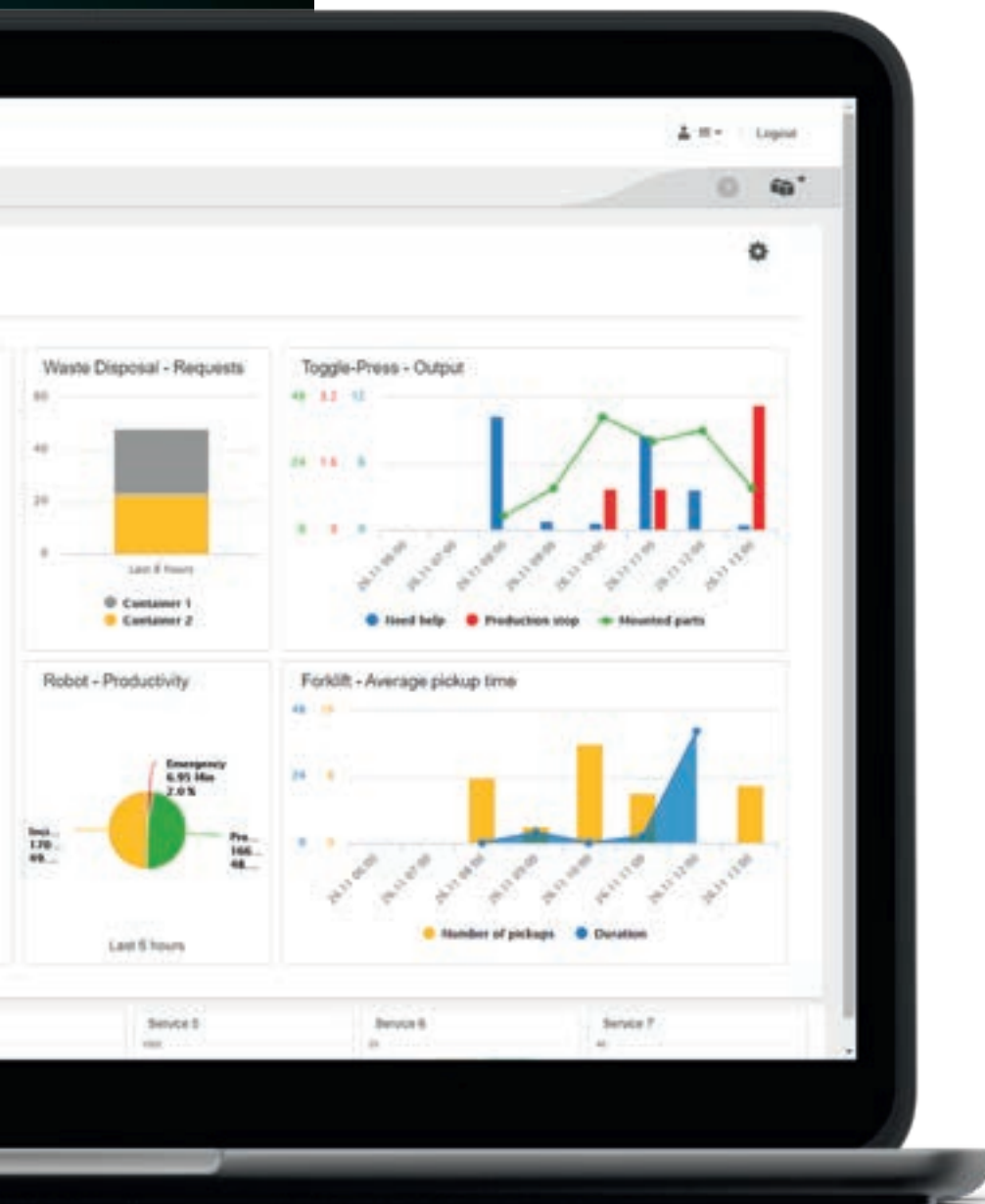
Process optimization and digitalization made easy





KIS.ME

Keep it simple. Manage everything.



Simple digitalization and optimization wherever people work – even in remote or manual workplaces. This ideal was our starting point. Now, with **KIS.ME**, we offer you the innovative solution for just that. You can make your company more transparent in no time, for example by linking manual processes. Optimization has never been easier – without any additional programming or management consulting. Connect, set up, and go. Try it out now!

OPTIMIZATION MADE EASY



2x Buttons



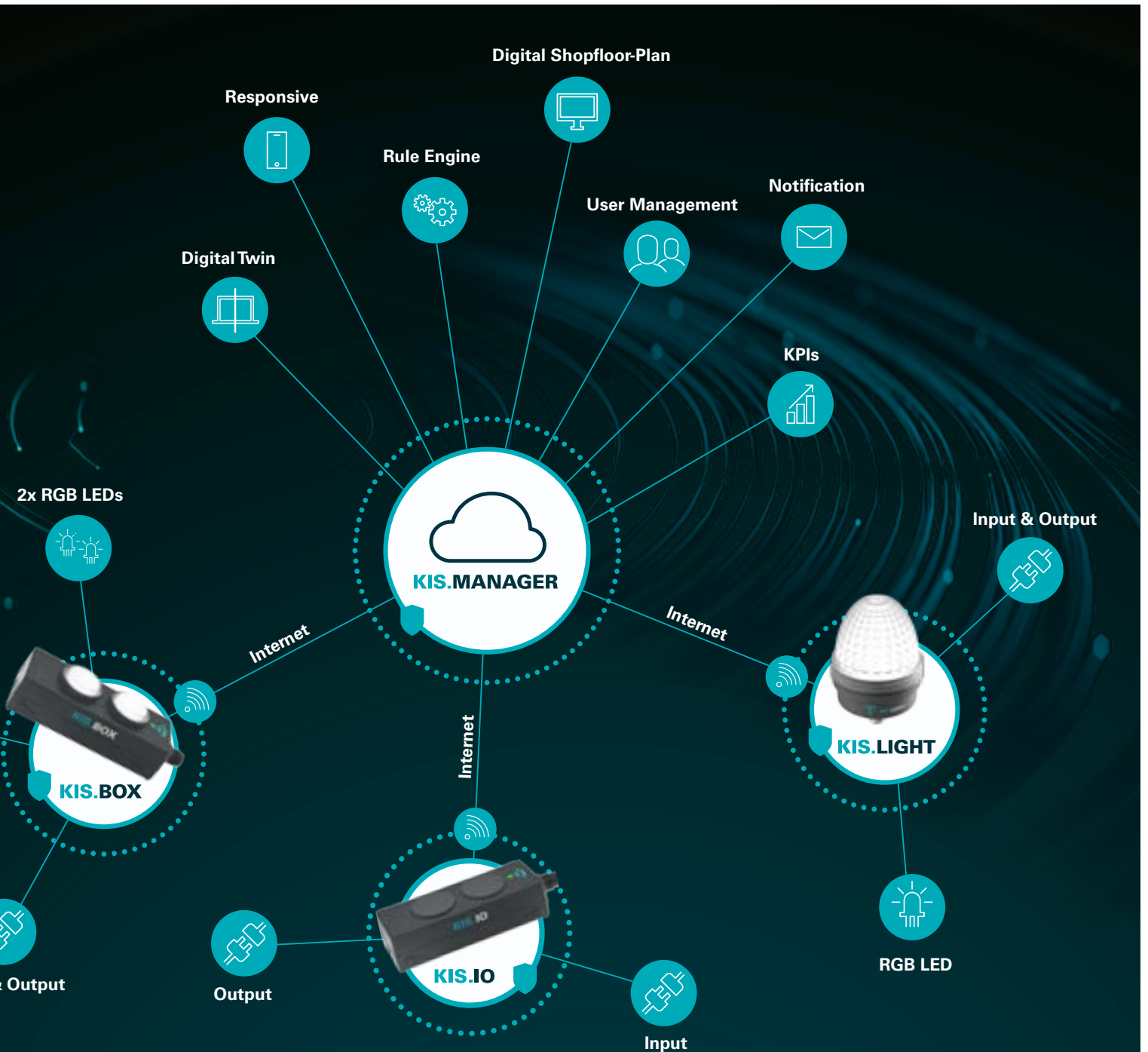
Input &

We have grouped together our expertise in electromechanics, electronics, and software, because automation and digitalization are frequently complex. To supply you with a product that you can easily use to flexibly optimize your production: **KIS.ME**. This includes the **KIS.LIGHT** signal lamp, the **KIS.BOX** control box, and the **KIS.MANAGER** web portal – for configuration and evaluation.

Modern machines and plants continuously collect data, some of which can be evaluated directly. But almost every machine and plant manufacturer has its own system. Maintaining an overview can be a challenge. In contrast, often no data at all is collected from manual processes. This makes it difficult to identify any optimization potential. **KIS.ME** is the answer: pro-

viding greatly increased transparency – without interfering with the actual process control.

It is not limited to a particular company size or specific industry. Whether manual workplace, intralogistics, or material supply; whether trade, industry, or local authority – there is potential everywhere. You can optimize downstream processes yourself, saving a lot of time and money. Define and determine your own KPIs with **KIS.ME**, digitalize existing machines, or monitor your processes in real time – without any programming or external advisors. Finally, you get relevant data where you've always wanted it.



YOUR BENEFITS AT A GLANCE

Wide range of applications

- Capture manual and automated processes with ease
- Retrofitting: Digitalize your existing machinery with KIS.ME
- Activate actuators to control additional processes
- Logistics on demand: Save time and money through more efficient deployment of personnel and transparent processes

A sure thing

- Current security standards and approvals relating to WLAN and web portals
- Benefit from mechanically rugged **RAFI** products for industrial use
- No alteration of or access to existing machine and plant controls or company networks required

Easy to use

- Low-maintenance thanks to automatic device updates
- Practical portal solution: no local installation, automatic data backup
- Access the KIS.MANAGER from any internet-capable device
- Receive notification by mail when defined events occur
- Create your own procedures (rules) to control your processes according to your needs

CONNECTED TO THE FUTURE

KIS.BOX and **KIS.LIGHT**. Two industry-ready products, one clear advantage: You have access to all critical data quickly and conveniently. By simply integrating the command and signaling devices into your process via Plug&Play. With the Powerbank included in the starter kit, you can quickly test to find out where it makes most sense to use **KIS.ME**. Wireless communication means you can stay flexible, even if there are changes in your processes.

You can even go one step further and make your machinery fit for the future in an instant. Just use two digital inputs and outputs on the devices to connect up sensors and actuators. For example, use light barriers to collect productivity data. Or control external motors, lights, or control systems to integrate additional process steps. Of course, you can also replace the signal lamps in your existing machines and plants. Then you have a convenient digital overview of the states of your machines on your portal. This allows you to monitor processes, avoid downtime, and increase your productivity.



KIS.LIGHT

- Signal lamp with integrated WLAN
 - Plug&Play: M12 terminal
 - Status display with various RGB colors
 - Industry-ready: IP 66 and IP 67
 - Two digital inputs
 - Two digital switch outputs
-

KIS.BOX

- Control box with integrated WLAN
 - Plug&Play: M12 terminal
 - High-quality RAFIX key switches – plus optional custom legending with FLEXLAB
 - Industry-ready: IP 65
 - Two digital inputs
 - Two digital switch outputs
-



ALWAYS KEEP TRACK OF EVERYTHING

USER EXPERIENCE

Work intuitively: Intuitive key switches and symbols make operation easy.

SHOPFLOOR PLAN

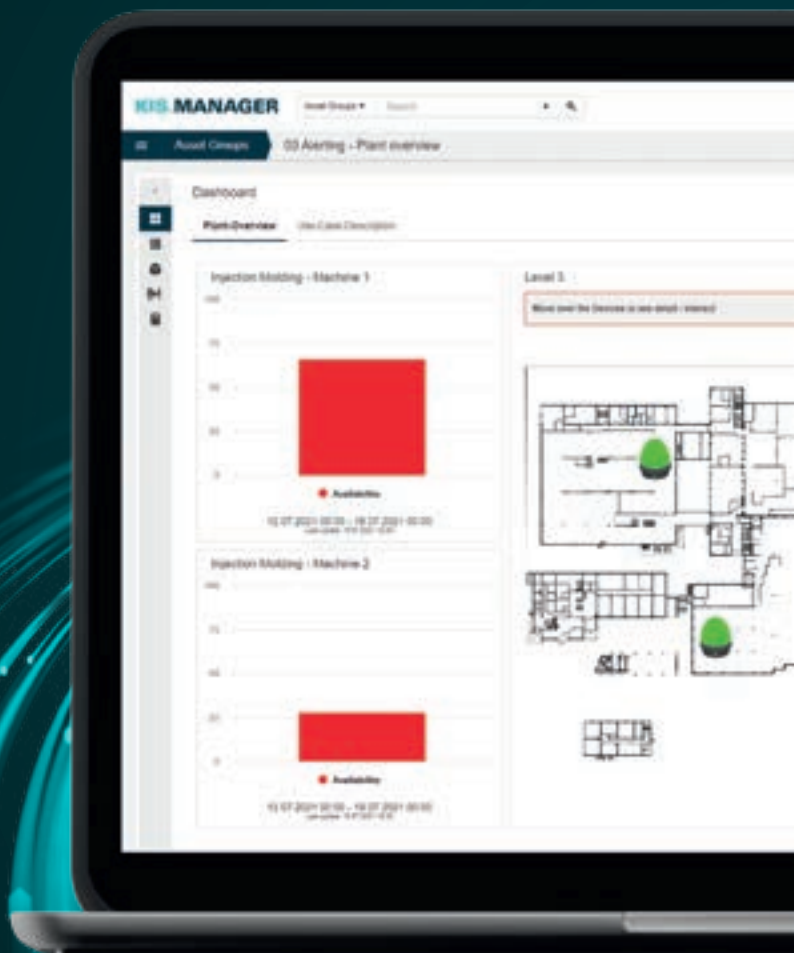
Upload your own shopfloor plans and get a bird's-eye view of the state of all devices at any time.

RULE ENGINE

Quick and easy: Generate your own logical process flows (rules) with just a few clicks. This allows you to control your processes conveniently to your own specifications.

DEVICE OVERVIEW

All devices at a glance. You will find all the data on your devices in one place.



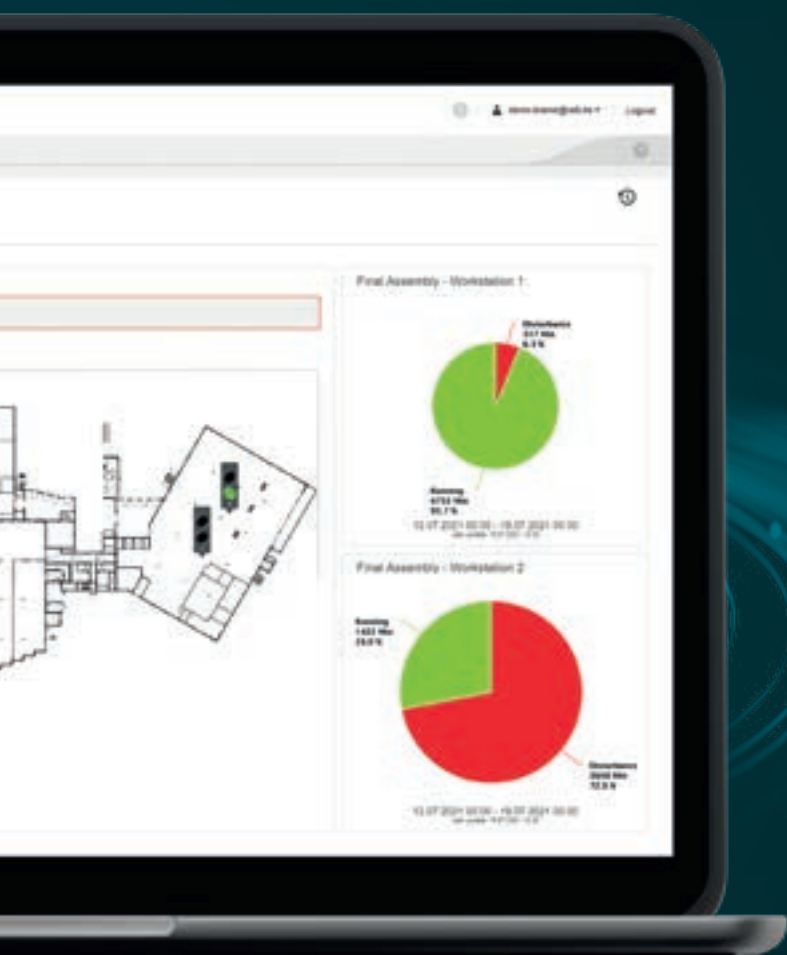
NOTIFICATION

Define events and states that you want to be notified of by email.

KIS.ME allows you to connect a wide variety of different machines, manual workstations, and logistics processes – in a uniform data format and a single portal: the **KIS.MANAGER**. You keep track of states, processes, and KPIs in real time. Monitor states from any internet-capable device or receive information about events. In case of changes: You can quickly and easily alter the processes yourself.

WORK SPACES

Create groups for various areas and use cases with the appropriate devices and rules. User authorizations are easy to set up and enable easy access for colleagues.



KPI CALCULATOR

Define the precise KPIs that are important to you. Then obtain individual graphics and diagrams. This makes it very easy to spot optimization opportunities.

DATA ANALYSIS

Visualize your data with graphs and diagrams in real time to optimize your processes and initiate improvements.

DIGITAL TWIN

Mouse click instead of keypress: The digital twin digitally maps the real state of the devices. You can also virtually control physical devices.

TECHNICAL DATA

GENERAL

PROTECTION CLASSES

- KIS.BOX: IP 65
- KIS.LIGHT: IP 66, IP 67

TEMPERATURE RANGE

- Operating temperature: -30°C to 50°C
- Storage temperature: -40°C to 85°C

ILLUMINATION

- RGB LEDs

WLAN:

- Standard: IEEE 802.11 b/g/n 2.4 GHz
- Encryption: WPA / WPA2 CCMP
- Range: 100 m in the open

APPROVALS AND STANDARDS

WIRELESS APPROVAL FOR EUROPE

- ETSI EN 301 489-1
- ETSI EN 301 489-17
- ETSI EN 300 328

EMC

- Interference immunity residential use: DIN EN 61000-6-1
- Interference immunity industry: DIN EN 61000-6-2
- Interference emission residential use: DIN EN 61000-6-3
- Interference emission industry: DIN EN 61000-6-4

EMVU

- Human exposure effects: DIN EN 62311

MODELS

KIS.BOX

3.00.001.001/0000

KIS.LIGHT

3.00.001.101/0000

KIS.IO

3.00.001.002/0000

KIS.ME STARTER KIT

9.00.002.282/0000

All the data is available to download from the eCatalog:
ecatalog.rafi-group.com

TERMINALS

CONNECTION TYPE

- M12 8-pin, a-coded

VCC-USB MODE:

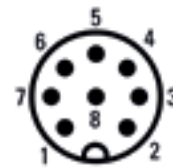
- For configuration and operation at USB port
- Inputs and outputs may not be used
- Nominal voltage: 5 V \pm 10%
- Max. input current (without outputs): 700 mA

VCC INDUSTRY MODE:

- Full range of functions apart from USB communication
- Nominal voltage 24 V \pm 20%
- Max. input current (without outputs): 150 mA

PIN ASSIGNMENT

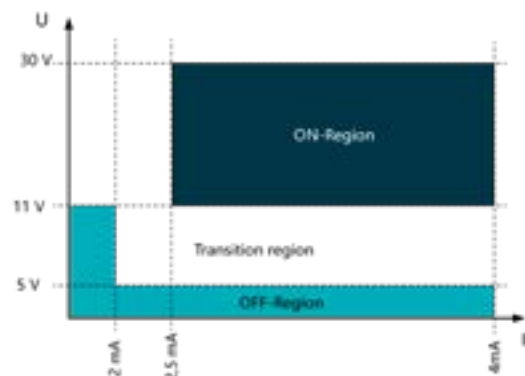
- Pin 1: VCC
- Pin 2: Input 1
- Pin 3: GND
- Pin 4: Input 2
- Pin 5: Output 1
- Pin 6: Output 2
- Pin 7: USB D+
- Pin 8: USB D-



DIGITAL INPUTS

- Minimum signal duration between edge change: 500 ms
- Input ON / OFF definition:

Input ON / OFF Definition



DIGITAL OUTPUTS

- ON (HIGH): VCC - 1 V
- OFF (LOW): high resistance
- Max. power load: 200 mA
- Max. make current: 10 A
- Thermal protection: yes



Order your starter kit now at kisme.com



The information in this brochure contains general descriptions and performance characteristics which may not apply exactly in the specific application and/or which can change due to further development of the products. The technical data, images, and other details of our products are merely the results of individual technical tests. These and other performance characteristics are only binding when they are expressly agreed upon conclusion of the contract. Otherwise, the following applies:

We reserve the right to change delivery options and technical details. Products are similar to the illustrations and other forms of representation. All product designations can be brands or product names of the RAFI Group or other suppliers whose use by third parties for their own purposes may violate the owner's rights.



RAFI GmbH & Co. KG

A RAFI Group company

Ravensburger Str. 128-134, 88276 Berg, Germany

P +49 751 89-0, F +49 751 89-1300

rafi-group.com, info.headquarters@rafi-group.com

